

## Comparison of Storz Fittings

Storz fittings are used in fire-fighting applications. As such it is very important to use a good quality, dependable fitting.

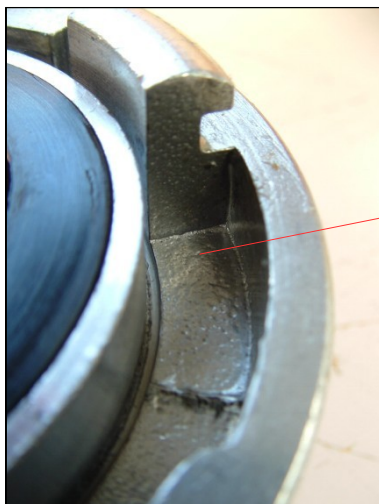
Storz couplings and adaptors made in Germany are manufactured to various DIN standards covering materials, tolerances, method of manufacture etc. This ensures high quality, couplings that fit together properly and are safe to use in their intended applications.

Unfortunately there are other manufacturers of Storz fittings that produce Storz fittings which do not comply to the relevant DIN standards. Particularly of concern are the material composition and method of manufacture.

For use in fire fighting the Storz clamp fittings must be manufactured from drop-forged aluminium. All German Storz fittings used for fire fighting will be forged. It seems there are other Storz fittings which are cast aluminium and as a result may contain cavities which result in a much weaker fitting.

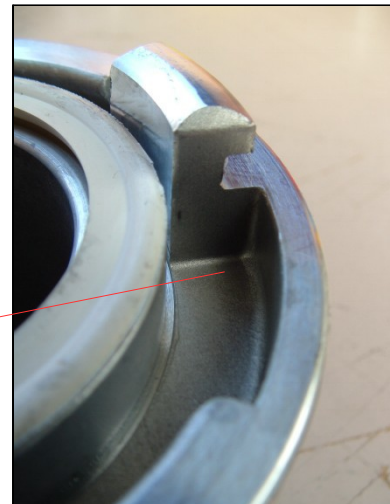


**Cast fittings compared to forged fittings**



Cast fitting:  
marks from mould  
may contain cavities

Forged fitting:  
Smooth appearance  
Homogeneous  
composition



# Identifying Storz Couplings

The following might help to identify which Storz couplings you have.



## **AWG**

DS coupling

AWG marking



NEN 3374 marking  
(Netherlands Standard on  
Storz 65)

May have DIN marking  
depending on Storz size

Smooth forged appearance

D would be similar  
to the F-V version

## **Other**

D coupling

No markings on clamp  
section

Rough cast appearance

## **Feuer-Vogel**

D coupling (short)

Feuer-Vogel marking



NEN 3374 marking  
(Netherlands Standard on  
Storz 65)

May have DIN marking  
depending on Storz size

Smooth forged appearance

DS would be similar  
to the AWG version

The above Feuer-Vogel coupling is a short delivery version. The DS version would be very similar to the AWG version above. The short versions are not really used in Australia. Only shown here to show where markings may be.

## Comparison of Storz Seals

Storz seals are a vital part of the Storz system – they form the seal between the various Storz couplings and adaptors.

It is important to use the correct seal for the correct application.

Storz delivery (D) seals are designed for use in delivery lines where the fluid is under pressure. These cannot be used for suction use.

Storz delivery/suction (DS) seals may be used for both delivery and suction lines.

The seals can be used together i.e. a DS seal can be coupled to a D seal, however these connections cannot be used for suction use.

Recently there seems to be a bit of misinformation about the colour of the seals being the determining factor for their respective use i.e. delivery or delivery/suction. This is not true.

The colour of the seal does not matter. It is the shape of the seal that is important. There are black and white D and DS seals. Their function will be the same as their respective 'other colour' the difference is the white seals do not contain carbon black.

It would appear that other Storz fittings are supplied with black D seals. German Storz fittings may have either white or black seals. AWG generally use white seals for both D and DS fittings. Feuer-Vogel generally have more black seals for D and DS fittings, however they also have white seals.



### **AWG**

DS seal – has suction lip on outer rim of seal

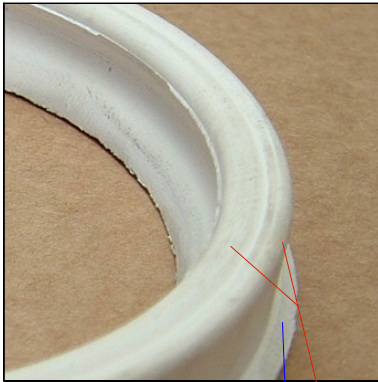
### **Other**

D seal – is flat  
No suction lip  
Cannot be used for suction use

### **Feuer-Vogel**

DS seal – has suction lip on outer rim of seal

Further differences in the seals are as follows:



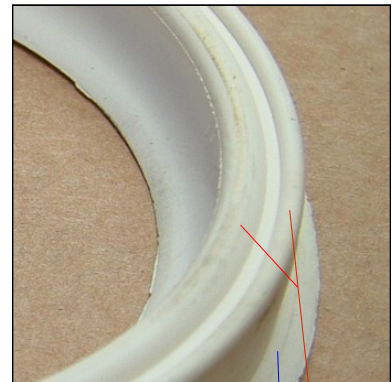
**AWG**

DS seal – has ring bulges  
Suction lip



**Other**

D seal – is flat  
No ring bulges on  
square base  
No suction lip



**Feuer-Vogel**

DS seal – has ring bulges  
Suction lip

In summary:

- The correct Storz fitting with the correct seal must be used.
- The D seals are suitable only for delivery use. They do have ring bulges like the DS seals on the bottom, but do not have the suction lip on the flat front surface.
- The DS seals are designed for suction use, but may be used for delivery use.
- The colour of the seal is immaterial, it is the shape that determines its function.
- German seals should be interchangeable with German fittings .